

— NİHAVEND SARKI —

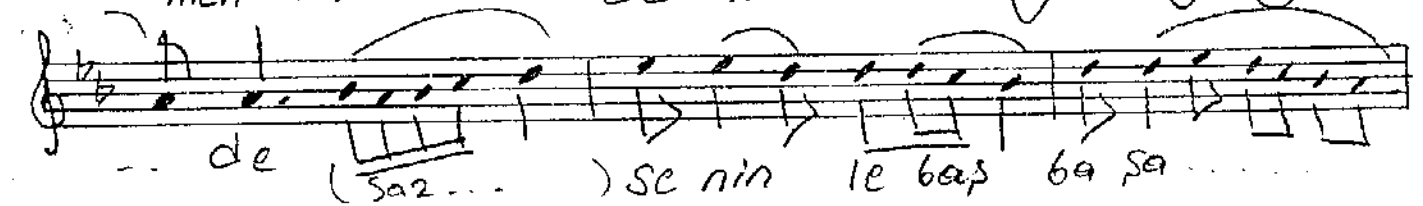
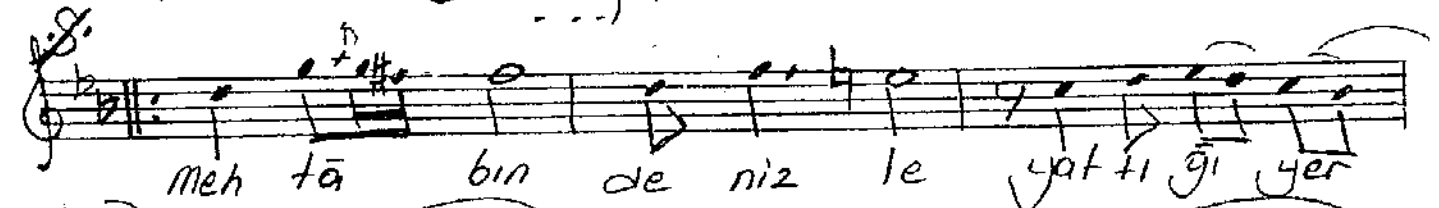
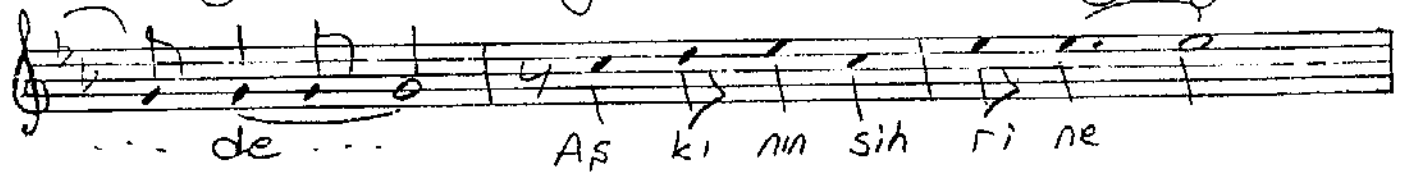
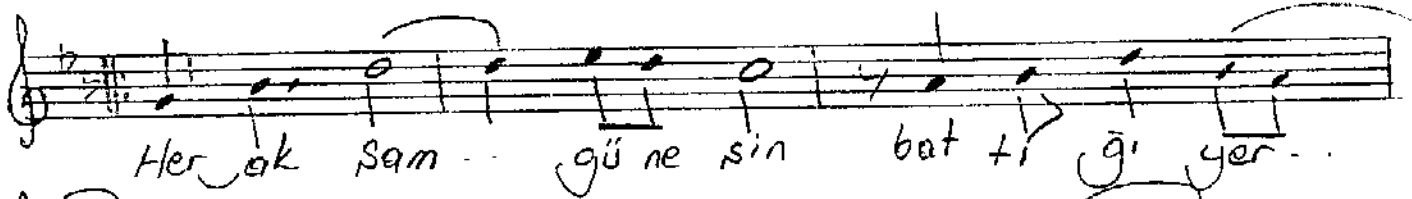
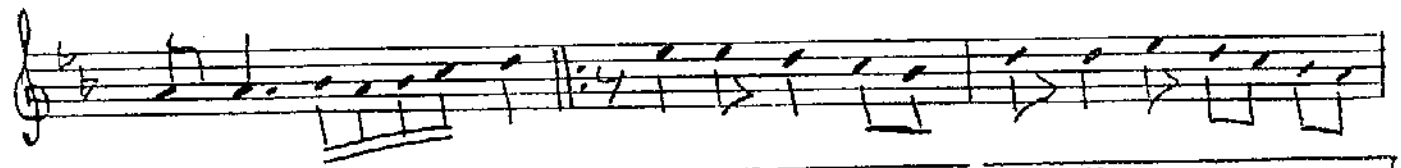
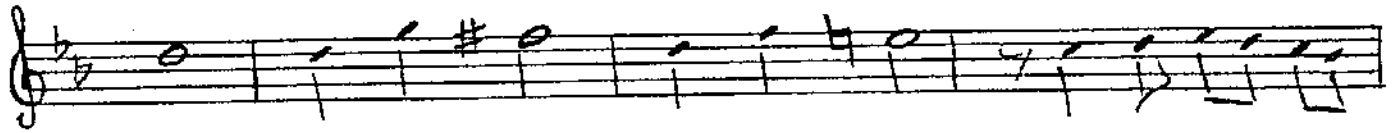
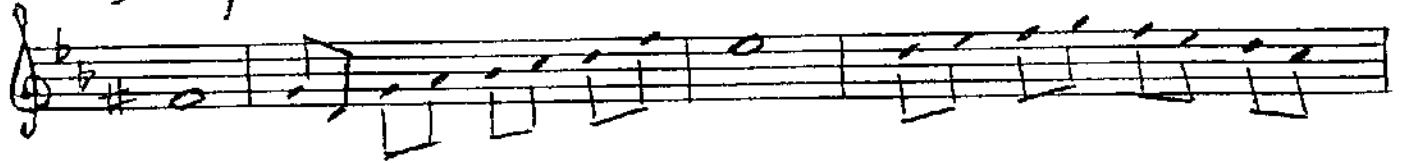
DÜNEK

(♩) = 240

(HER AKŞAM GÜNEŞİN BATTIĞI YERDE)

SÖZ: TANER AĞLAYAN

MÜZİK: REMZİ OKTAR



Kal mak is te rim (saz) (saz...)

... D.C

... Ay bü tün nu ru nu dö ker... ken su

ya... Nağ me le do lar... ken... (Ağır/azamık...)

Her bir kuy tu ya... (saz...) Buğu lu göz...

... ler... le da lip uy ku

ya... A tempo se ni düp le ri me...

Al mak is te rim... (saz...)

30-5-1996 Ant.